



COTMAV
c o t e r i e m a v e n

**COTMAV ROBOTICS AND
AUTOMATION**

ROBOTICS & INDUSTRIAL AUTOMATION

ABOUT US

- COTMAV is a system Integrator & Engineering solutions provider, Established in the year 2015.
- We are based in India & have our office at Jamshedpur presently. We operate majorly in eastern part of India.
- COTMAV is providing variety of services in Robotics and Industrial automation with innovative solutions.

MISSION

**“ TO ACHIEVE CUSTOMER’S
DELIGHT BY PROVIDING
OPTIMUM SOLUTION RELIABLY,
TIMELY, SAFELY WITH QUALITY
SERVICE ”**

OUR STRENGTH

- We have over 2000 sq. feet of assembly & testing facility with all kind of Tools & Tackles
- We have strong vendor base, where we manufacture our components with the precision of 10 microns upto length of 3000 mm & height 1500mm.
- We are System Integrators for Companies like ABB, Fanuc, Delta , Leuze & many.
- We have over 2000 man-days of automation experience, giving it an unparalleled advantage of achieving complete success on the assignments taken.
- Over 15 skilled employees & 6 Qualified & experienced Engineers. Having Experience in machine design, controls, software, manufacturing, quality control, equipment manufacturing an project management
- Our team members have worked in organizations like M/s ABB, M/s Tata Motors, M/s Tata Tinsplate, M/s Timken India, M/s TRL Krosaki, etc.

OUR MAJOR CUSTOMERS

- **LARSEN & TOUBRO, KOLKATA**
- **TAL MANUFACTURING SOLUTIONS LIMITED (TAL), PUNE**
- **RSB TRANSMISSIONS (I) LTD., JAMSHEDPUR**
- **ACCIL, KHOPOLI**
- **PRAVAT FABRICATORS (P) LTD.**
- **NEW ENGINEERING WORKS (P) LTD. JAMSHEDPUR**
- **SATI AUTO COMPONENT, JAMSHEDPUR**
- **WHEELS INDIA LTD.**

OUR MAJOR CUSTOMERS

- **BATTCO ENG. BANGLADESH.**
- **SHAH SPONGE IRON PVT. LTD.**
- **RKFL LIMITED.**
- **NIROS ISPAT LTD. BHILAI.**
- **AND MANY MORE.....**

WE OFFER

- **SUPPLY, INSTALLATION & COMMISSIONING**
- **TURNKEY PROJECTS & RETROFITTING**
- **ANNUAL MAINTENANCE CONTRACT**
- **TRAINING**

WE OFFER

- Capturing & Understanding the Need of Customer.
- Conceptualizing the Solution.
- Engineering of the solution into implementable Design
- Manufacturing & Factory Testing of the system to ensure the desired performance
- Installation, Commissioning & Production support at Customer site
- Post Sale Service Support for product lifecycle
- Project Management functions required during the project lifecycle.

ROBOTICS SOLUTION

- SPOT WELDING
- ROLLER HEMMING
- ARC WELDING
- MATERIAL HANDLING
- SEALANT/GLUING
- MACHINE TENDING
- FORGING & HOT FORMING
- DEBURRING & POLISHING
- PALLETIZING
- SKIMMING
- SHOE ROUGHING
- THERMAL CUTTING

ROBOTICS SOLUTION



Industrial Robots: Software:

- ABB
- Fanuc
- Robot Studio
- Robo Guide
- Promia
- Auto CAD
- Creo
- Solid works

INDUSTRIAL AUTOMATION

-Application, Products
& Software

- HMI display
- Line Automation
- Bar code & RFID system
- Part counting
- Various Motion controls
- SCADA System
- SIEMENS , Delta,

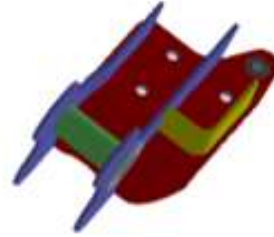
SPECIAL PURPOSE MACHINE

- Part Loader for CNC machines
- Part Loader for Induction hardening machines
- Part feeders
- Input/output chutes for parts
- Escapement
- Bowl Feeder
- Automatic Sheet cutting machine.

Project Details

CUSTOMER : RSB Transmissions (I) Ltd.

PROJECT : Robotic ARC welding for Lift axle component (Lower beam & hanger bracket.)



LOWER BEAM



HANGER BRACKET

SCOPE:

WELDING MACHINE: FRONIUS TPSi500 : 1 NO.

ROBOT: FANUC : 1 NO.

POSITIONER : 2 AXIS-SERVO : 2 NOS.

PLC PANEL : 1 NO.

DURATION OF THE PROJECT : 4 MONTHS (INCLUDING DESIGN, ENGINEERING, SUPPLY & COMMISSIONING)

CELL LAYOUT:



CUSTOMER : Sati Auto Component Pvt. Ltd.

PROJECT : Investment Mold casting using Robot



PLC PANEL



MCC PANEL +DRIVE

SCOPE:

GRIPPER: PNEUMATIC : 1NO.

ROBOT: ABB IRB-6700 :1 NO.

MCC : 1 NO.

PLC PANEL : 1 NO.

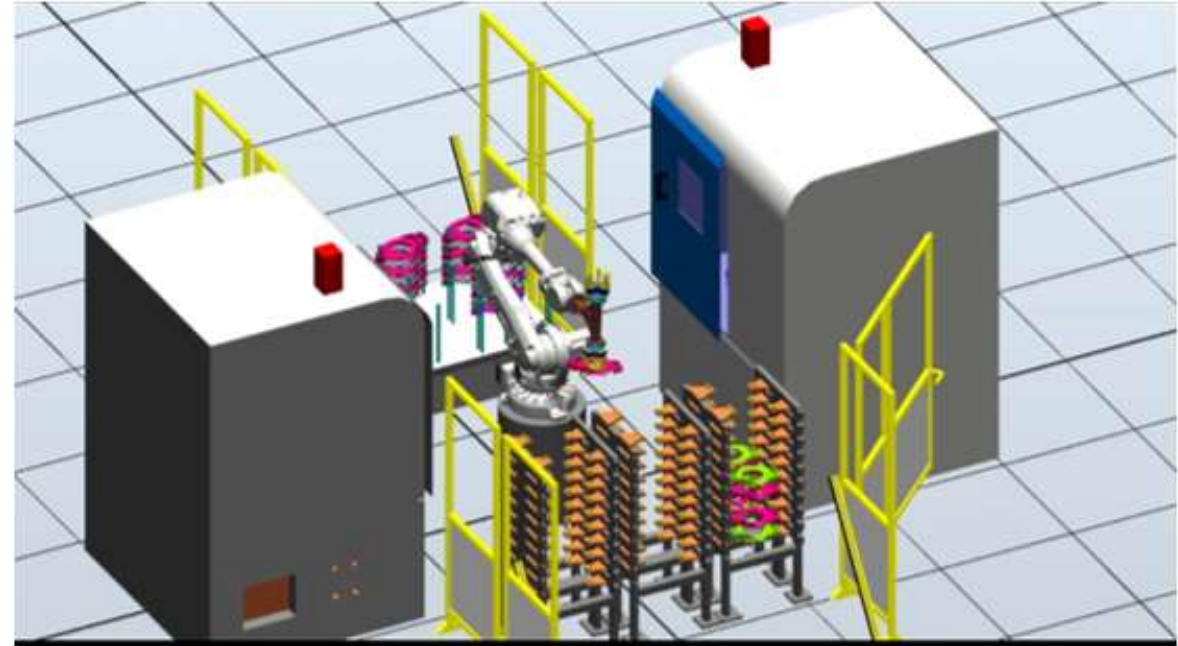
DURATION OF THE PROJECT : 3 MONTHS (INCLUDING DESIGN, ENGINEERING, SUPPLY & COMMISSIONING)

Project Details

Project Details

CUSTOMER : NEW ENGINEERING WORKS

PROJECT : TORQUE PLATE PICK & PLACE FROM VTL MACHINE.



SCOPE:

GRIPPER: PNEUMATIC : 2 NOS.

ROBOT: ABB : 1 NO.

PLC PANEL : 1 NO.

DURATION OF THE PROJECT (UNDER COMMISSIONING) : 3 MONTHS (INCLUDING DESIGN, ENGINEERING, SUPPLY & COMMISSIONING)

Project Details

CUSTOMER : Larsen & Toubro Limited, Construction.

PROJECT : complete supply, erection, configuration and commissioning of Master Slave system for 690V MCB drives at Stock House.



SCOPE:

PLC PANEL : 1 NO.

DURATION OF THE PROJECT : 3 MONTHS (INCLUDING DESIGN, ENGINEERING, SUPPLY & COMMISSIONING)

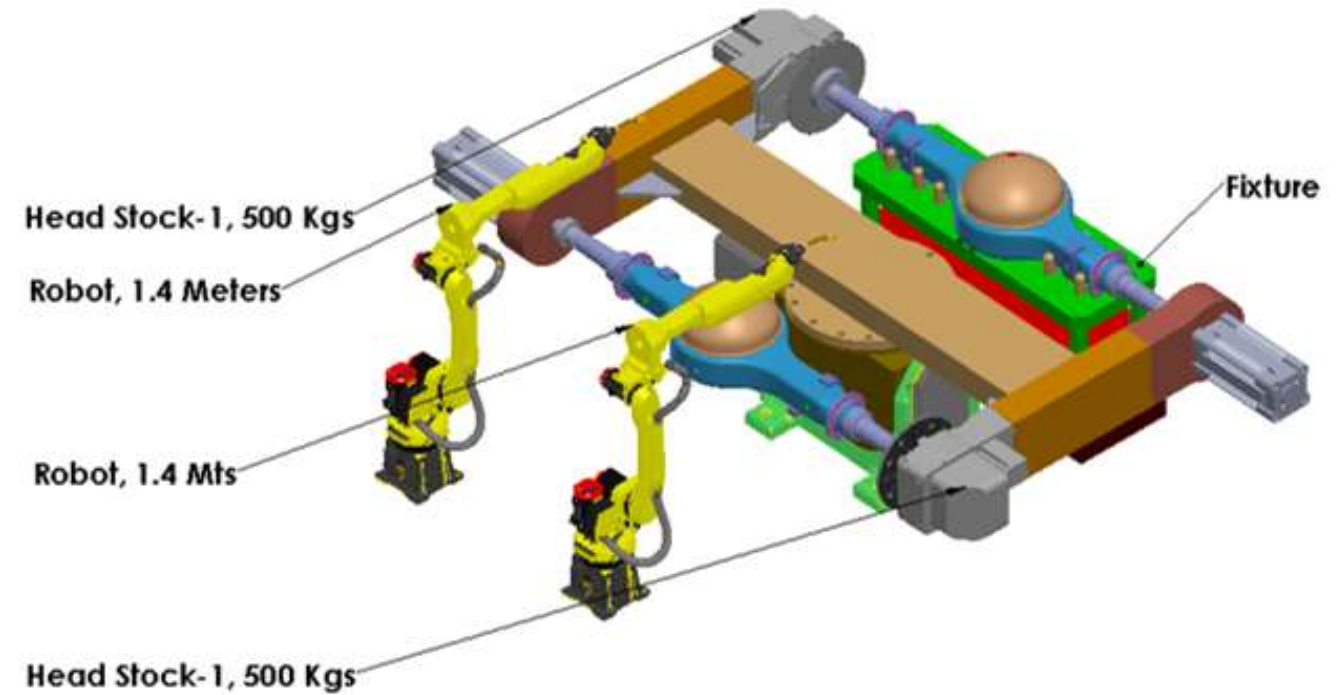
REQUIREMENT : CONTROLLING OF DRIVE (SPEED/TORQUE) USING SIEMENS PLC BY FLOATING MASTER FOLLOWER CONCEPT.

Project Details

CUSTOMER : RSB Transmissions (I) Ltd.

PROJECT : Live Axle bracket welding using H positioner

CELL LAYOUT:



SCOPE:

WELDING MACHINE: Lincoln R450 : 2 NOs.

ROBOT : ABB : 1 NO.

POSITIONER : 3 AXIS-SERVO : 1 NOS.

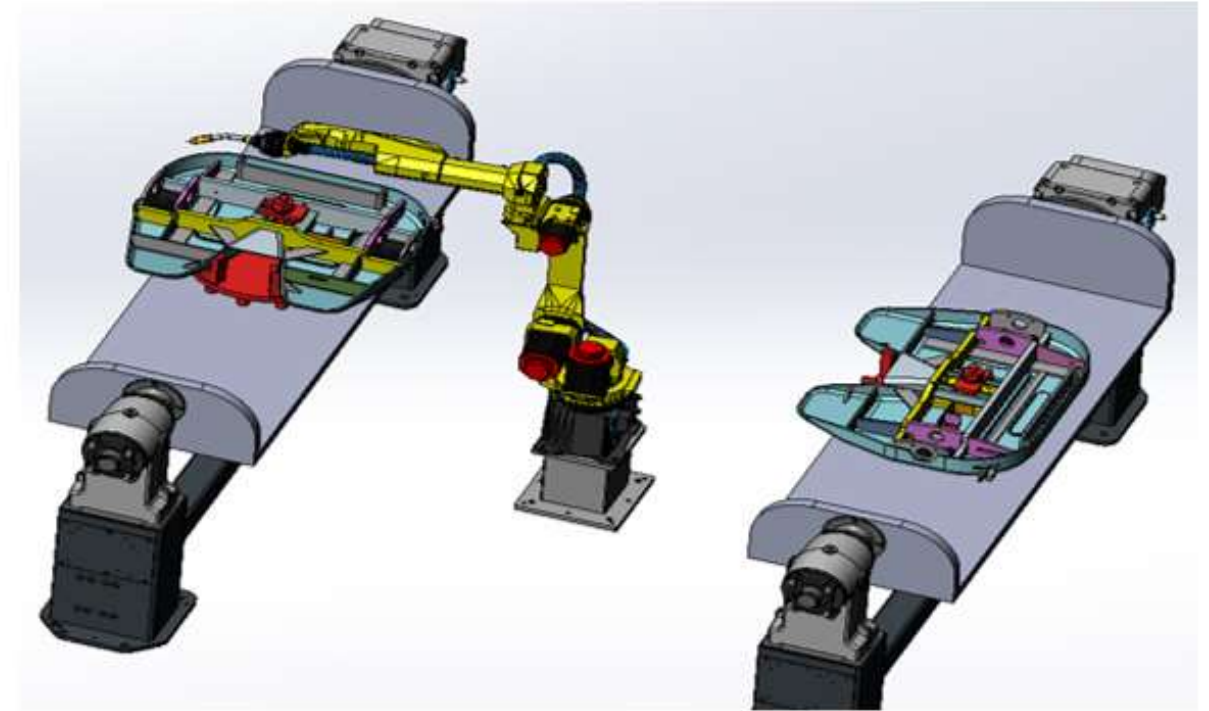
PLC PANEL : 1 NO.

DURATION OF THE PROJECT : 4 MONTHS (INCLUDING DESIGN, ENGINEERING, SUPPLY & COMMISSIONING)

CUSTOMER : RSB Transmissions (I) Ltd.

PROJECT : Fifth wheel coupling with

Project Details



SCOPE:

WELDING MACHINE: Fronius TPSi500 : 1 NOs.

ROBOT : Fanuc : 1 NO.

POSITIONER : 1- AXIS-SERVO : 2 NOS.

PLC PANEL : 1 NO.

DURATION OF THE PROJECT : 4 MONTHS (INCLUDING DESIGN, ENGINEERING, SUPPLY & COMMISSIONING)

Our Details

Legal NAME COTMAV ROBOTICS & AUTOMATION

PAN No. AAKFC8876A

GSTIN No. 20AAKFC8876A1ZM

Contact Us

- **Workshop Address:** C/o Jaspal Industries, C-31, Adityapur Industrial Area, 2nd Phase, Adityapur-832109

:

- Krishanu das : +91-8986640466
+91-9945109213
krishanu.das@cotmav.com
- Ujjwal Kumar : +918709302245
info@cotmav.com



THANK YOU